



11 Holywell Road, Pontypridd, CF38 1NA
£1,400 Per Calendar Month

**** Internal Viewing a must ** Well Presented & Improved ** Lovely Open Plan Living/Kitchen/Diner ****

A semi detached house located in the popular village of Tonteg, close to amenities, main roads, shops & schools. This property has been improved to a high standard and currently comprises entrance porch, large lounge, open plan refitted living/kitchen/diner, three bedrooms and first floor bathroom.

There is a front garden with parking and a good size rear garden with large patio.

The property has modern flooring and fresh, neutral decor throughout.

Conveniently located for amenities, local shops, schools & main roads.

Available now.

Entrance Porch

Lounge 23'2" x 16'10" max 7'11" min (7.08 x 5.15 max 2.42 min)



Living/Kitchen/Diner 16'11" x 9'10" plus 15'4" x 7'5" (5.16 x 3.02 plus 4.68 x 2.28)



First Floor Landing

Bedroom 1 12'10" x 9'4" (3.92 x 2.85)



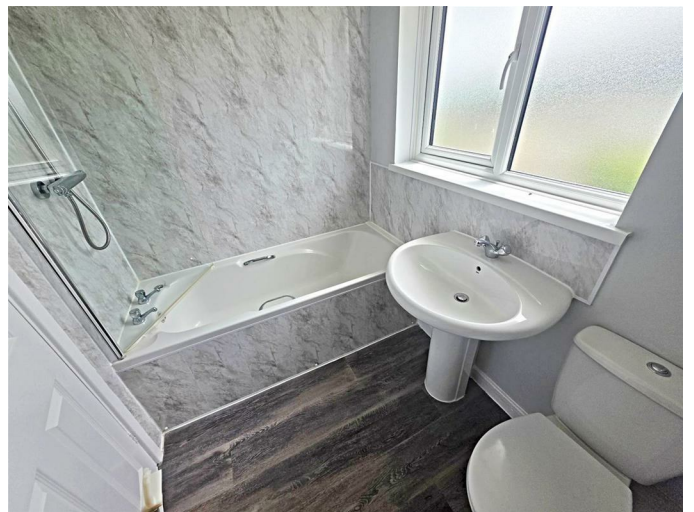
Bedroom 2 9'11" x 9'3" (3.04 x 2.82)



Bedroom 3 10'0" max 7'2" (3.06 max 2.20)



Bathroom/WC

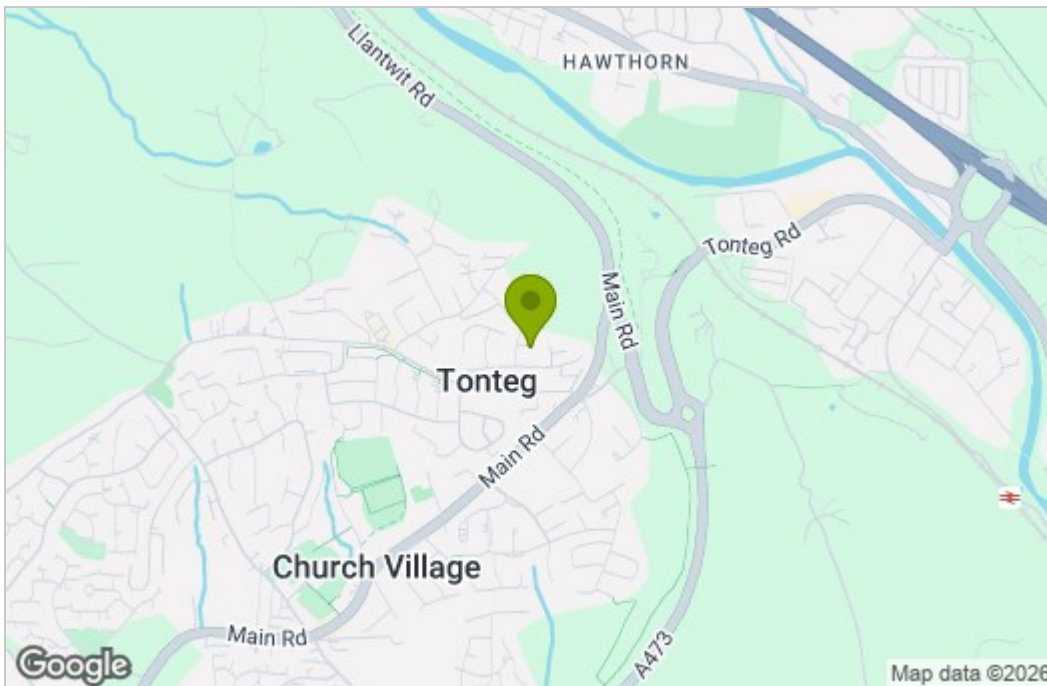


Gardens & Parking

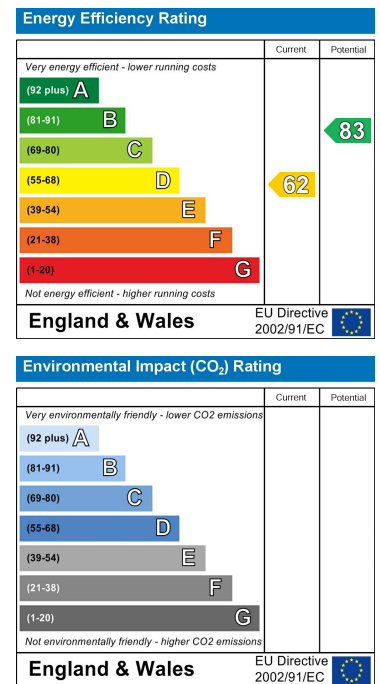


Floor Plan

Area Map



Energy Efficiency Graph



These particulars, whilst believed to be accurate are set out as a general outline only for guidance and do not constitute any part of an offer or contract. Intending purchasers should not rely on them as statements of representation of fact, but must satisfy themselves by inspection or otherwise as to their accuracy. No person in this firm's employment has the authority to make or give any representation or warranty in respect of the property.

22 Market Street, Pontypridd, CF37 2ST

Tel: 01443 404093 Email: pontypridd@hoskinsjohnson.co.uk www.hoskinsjohnson.co.uk